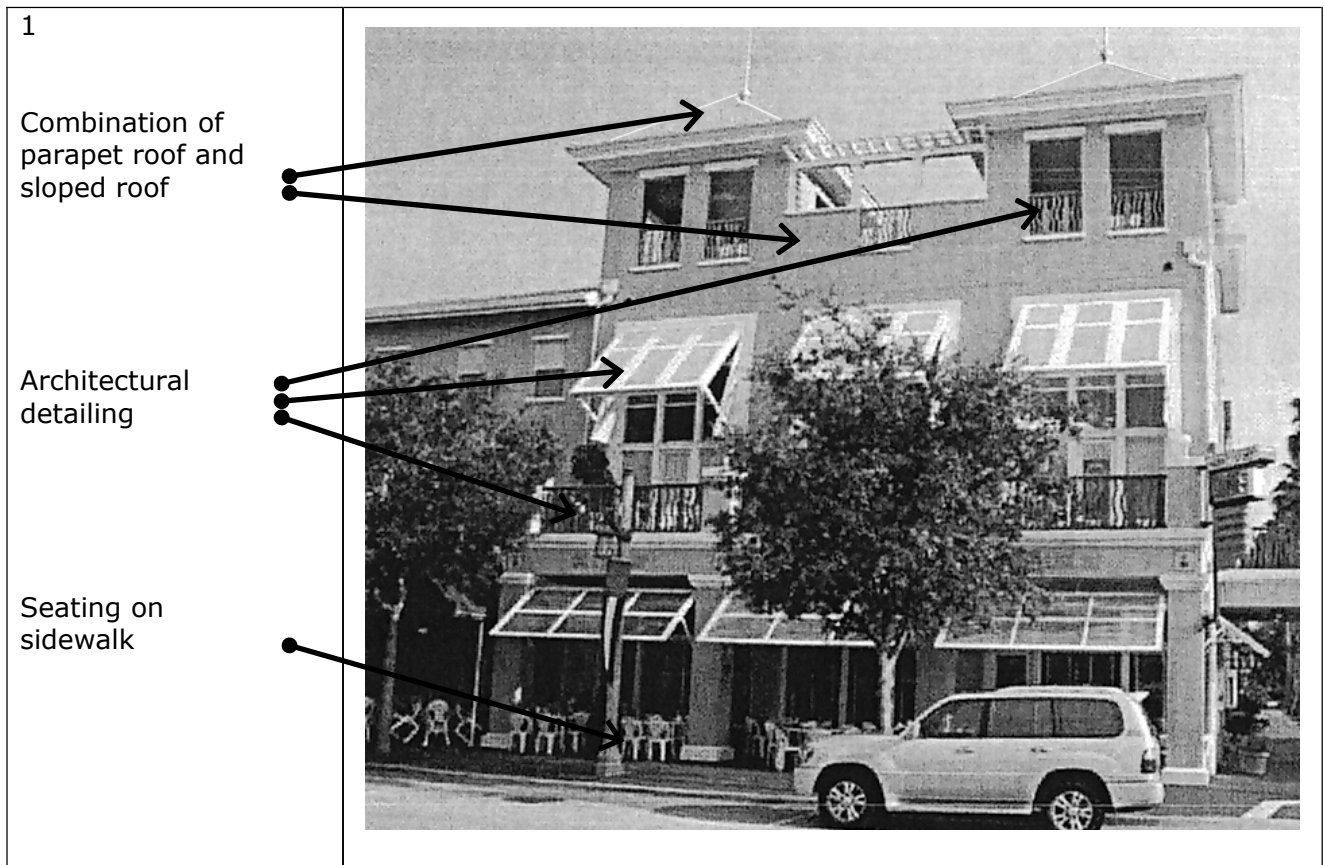


Appendix A

Examples of Design Elements: B-1 (General Business District)

The following illustrate particular examples of design elements regulated under the NSS zoning district and are provided **FOR INFORMATIONAL PURPOSES ONLY**. These examples are not adopted as regulations under the Unified Development Code. An applicant is encouraged to refer to the specific requirements relating to the NSS district as adopted in the UDC for specifics.



2

Sloped Roof

Architectural detailing

Masonry exterior



3

Street trees

Balcony and porch

Decorative lamp posts

Exterior lighting on signs

Signs are not dominant architectural feature

Architectural detailing

Seating at sidewalk

Landscaped beds in sidewalk



4

Street trees

Balcony and porch

Decorative lamp posts

Signs are not dominant architectural feature

Architectural detailing

Landscaped beds in sidewalk

Seating at sidewalk



5

Balcony and porch

Street trees

Decorative lamp posts

Exterior lighting on signs

Signs are not dominant architectural feature

Architectural detailing including window mullions, awnings, railings, and arches

Landscaped beds in sidewalk



6

Stone exterior

Sloped roof with architectural shingles

Decorative lamp posts

Street trees

Sidewalk pavers



7

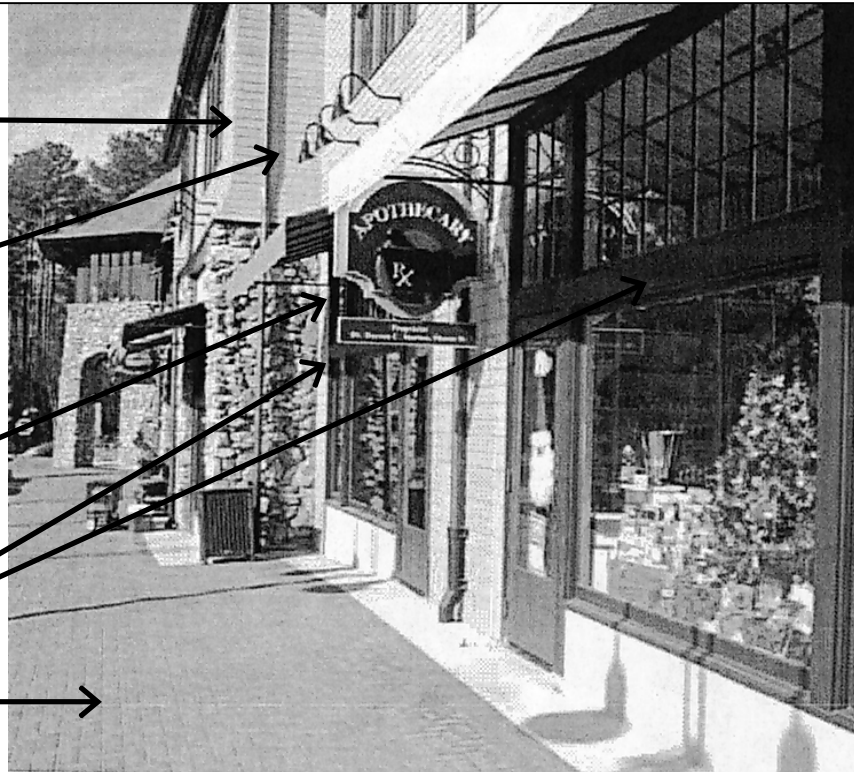
Facade material changes on inside corner - Not outside corner

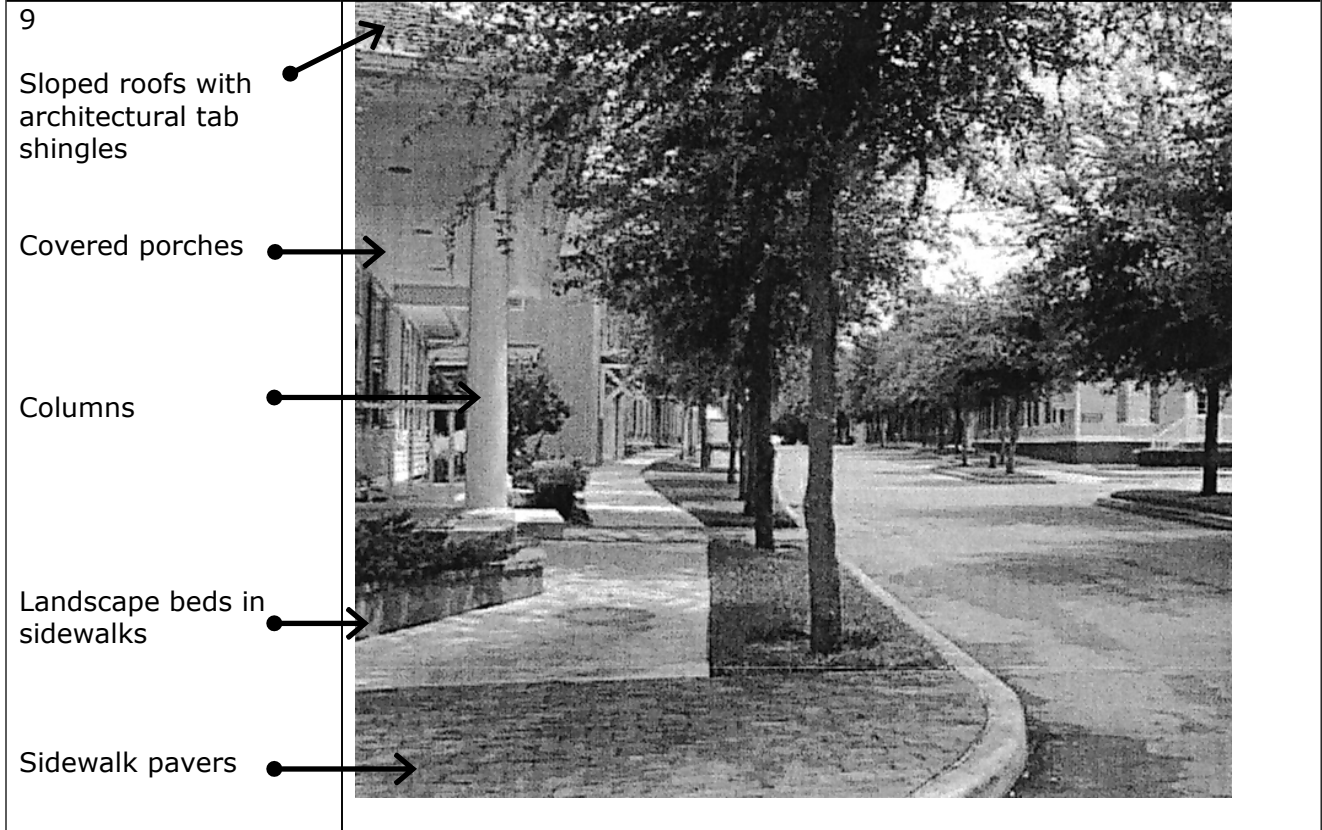
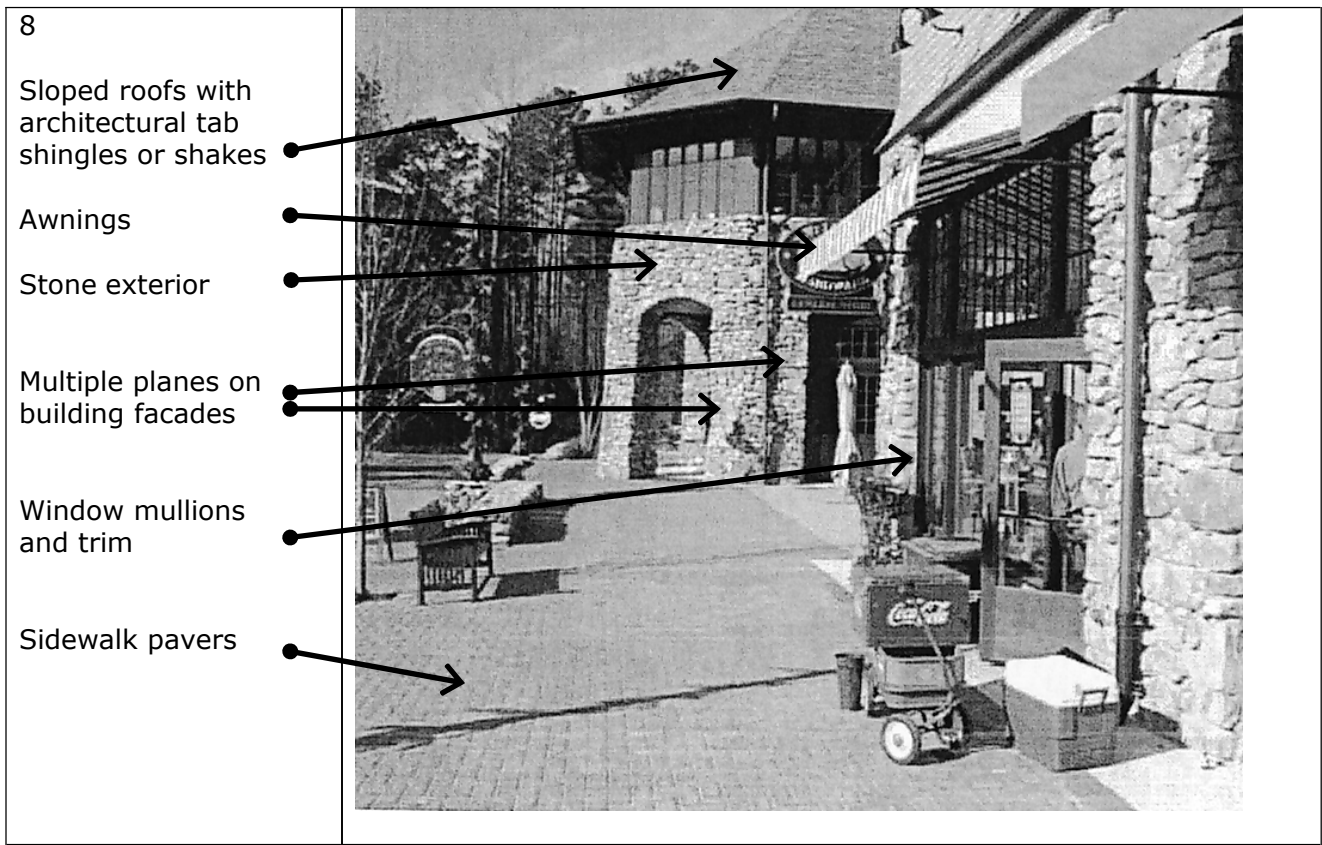
Exterior lighting of signs

Signs are not dominant architectural feature

Architectural detailing of both signs and buildings

Sidewalk pavers





10

Brick exterior

Decorative clock and lamp posts

Planting beds in sidewalks

Outdoor seating

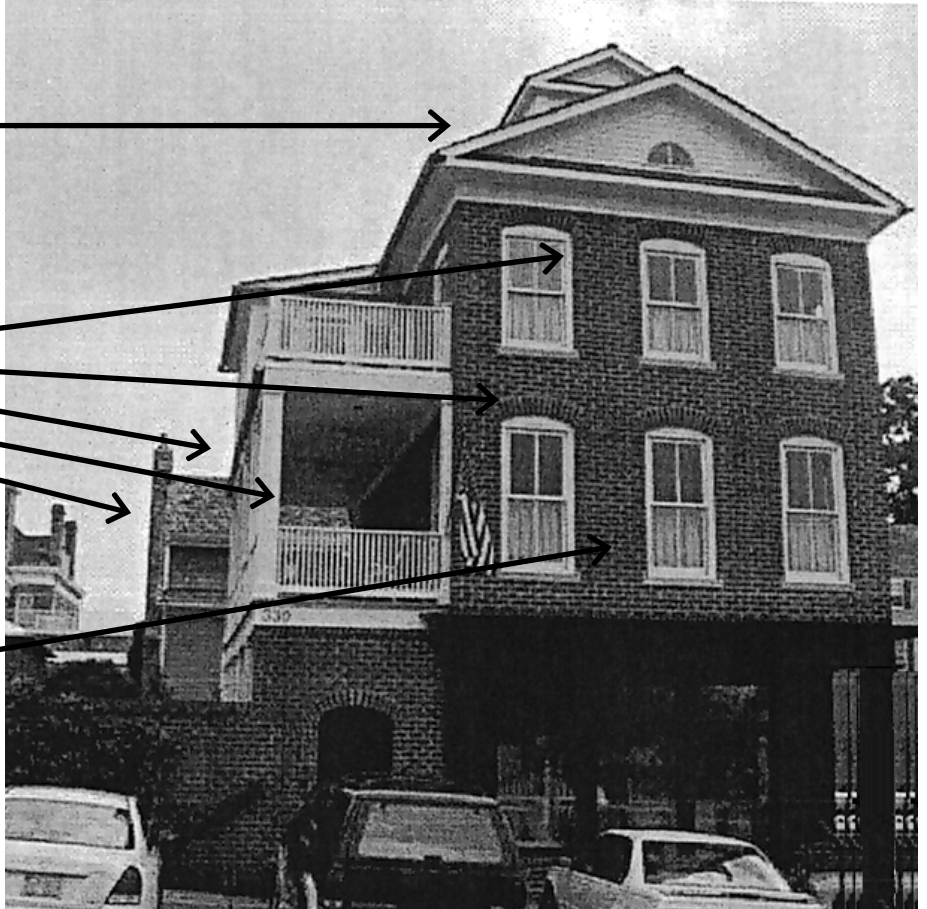


11

Sloped Roofs with architectural tab shingles or shakes

Architectural detailing including window mullions, brick arches, porches, columns, and chimneys

Brick exterior

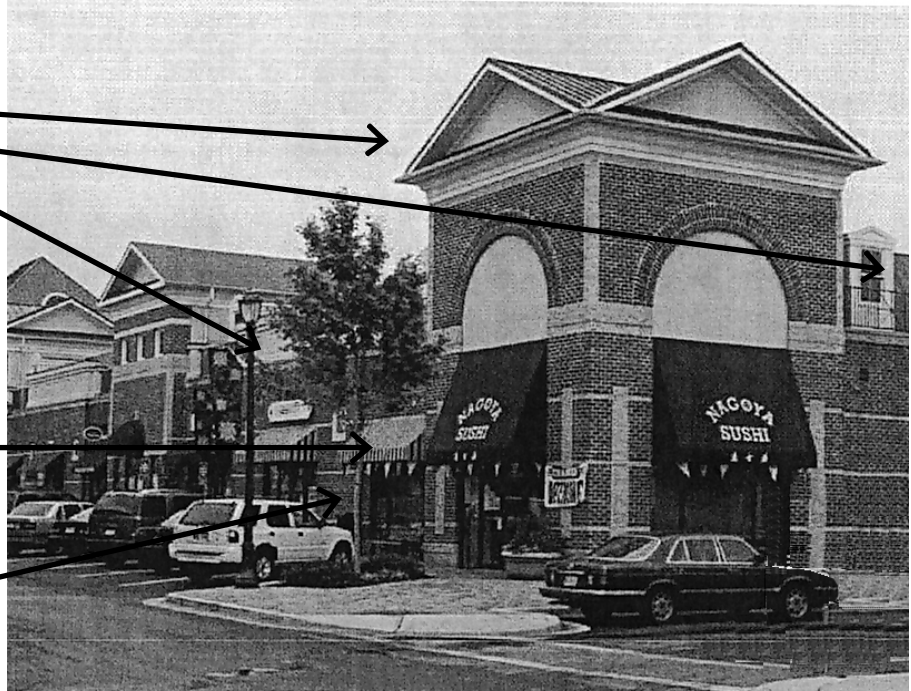


12

Mix of roof types
Sloped
Mansard
Parapet
(see text for minimum percentage of slope by type)

Architectural detailing including awnings, columns and soffit treatment

Street trees



13

Bricked and roofed dumpster enclosure with architectural detailing such as columns and custom brick work.

(Note: set gate posts three feet from structure per text)

